

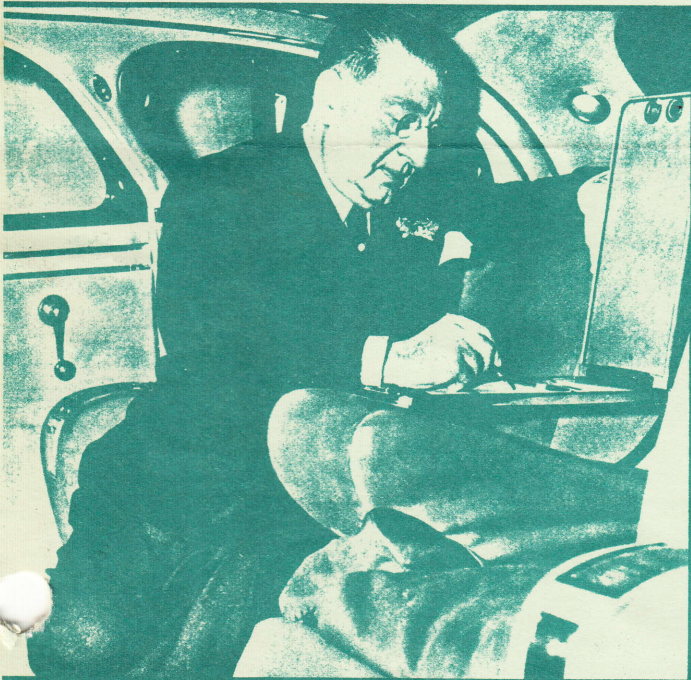
For the car above, Major Bowes paid \$25,000, the price of a fine home. He owns 10 other cars as well, but this one, the last word in craftsmanship, is the flagship of his fleet.

## MAJOR BOWES' \$25,000 CAR

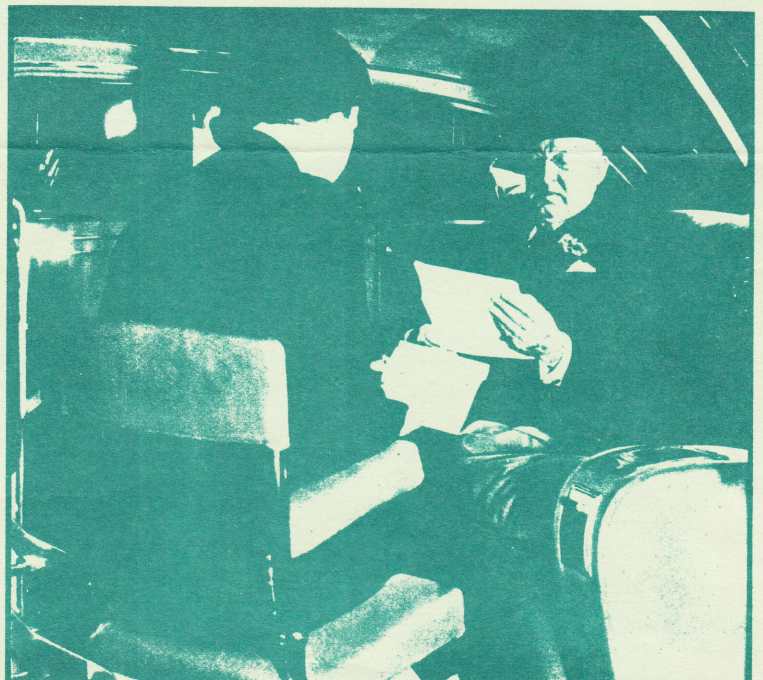
**T**HE SWEETEST CHARIOT in the land is a big, purring, glistening, super-deluxe Chrysler Imperial owned by the famous amateurs' impresario, Maj. Edward Bowes.

Designed for him two years ago by Walter P. Chrysler, himself, it is far more than an automobile; it is a combination home, office and restaurant. The car is just under 20 feet in length, with

a 146-inch wheel base and an eight-cylinder, 150-horsepower engine. Its color motif is green and gold (appropriate to the early autumn of life, which the Major is now enjoying). Its elaborate gadgets—shown in the following pictures—would be baffling, if not embarrassing, to the average motorist, but Major Bowes finds them useful and necessary in his feverish daily routine.



**HERE THE MAJOR** takes notes on a writing desk that rises from between seats. The arm-rest behind him contains radio control, two-way telephone, humidifier and ash tray. Ornamental fixtures are of Dirigold and hand-carved jade.



**WHEN RUSHED**, the Major puts his secretary into one of the flush-type swivel auxiliary chairs and dictates as he travels. And if he wants a quick grooming, he reaches into a compartment behind down-filled cushions for electric razor, brush and comb.



## World's Most Luxurious Motor Car is Major Bowes'

All the comforts of home, all the conveniences of the best appointed office and all the luxury of a maharaja's palace are combined in the new Chrysler Airflow recently delivered to Major Edward Bowes, the famous impresario of the radio amateur hour. This is beyond doubt the world's most extraordinary automobile in the variety and magnificence of its fittings. Unlike a trailer, it doesn't include sleeping accommodations, but there is about everything that anyone could need during his waking hours.

The car is a very large one, with a chassis of 146 inches wheel base and an eight-cylinder engine of 150 horsepower. It is approximately 20 feet in overall length. But size is only one of its many extraordinary features. Ingeniously fitted into the interior are all sorts of devices for serving food and beverages, for writing, for smoking, for making a hasty toilet and even for shaving—yes, there is an electric razor, which is said to be a great comfort to the Major as in the midst of his many activities he is always well groomed.

The novel interior was designed by F. A. Selje, Chrysler's chief interior body designer. The mechanical work was done by the LeBaron Detroit Company, with John Votypka, chief body engineer in direct charge, under the supervision of Mr. Selje. It is the most elaborate job of refitting the interior of a car ever attempted and it has worked out to the complete satisfaction of the fastidious Major Bowes.

The exterior of the car is painted a Brewster green and the interior upholstery is two shades of green Laidlaw broadcloth named "Major Bowes light" and "Major Bowes dark" in honor of the owner. The front compartment is done in two shades of green leather to match. In fact the whole motif is green and gold, selected by Mr. Selje as appropriate to the early autumn of life because these are the predominant tints in the early autumn of the year.

A glass partition separates the front and rear compartments. This partition is raised and lowered by an electric motor controlled by push buttons in the arm rest of the rear seat.

There is a Venetian blind in the rear window. The inside of the ventilating portion of the rear quarter windows is finished with an amber colored mirror and the outside is painted to match the body. Bands of Dirigold, a nontarnishable metal resembling gold, are applied above the doors, following the side contours of the roof and on the door panels. The door mouldings run into an ornamental design of hand carved jade plaques depicting the muses of the radio. There are four of these jade plaques, two on each door.

The greatest ingenuity was used in designing the console that is placed on the division between front and rear compartments. At the top center of this console is an instrument grouping that includes thermometer, clock,

and compass. Above these are two humidors, a cigar lighter and ash tray all covered by ornamental metal covers. On each side of the instrument grouping are compartments holding bottles and glasses of very handsome design.

Directly below the instrument grouping is a collapsible serving table lined with amber mirrors and having indirect lighting. Here are found two siphon bottles and four modernistic decanters. All of these things, as well as the glass-holders found in the other compartments, are of hand-fashioned Dirigold with an engraved crest. At the bottom of the serving compartment is a drawer constructed of stainless steel. In its center is a thermal compartment for the storage of ice cubes, cold beverages, etc. On either side of this is a compartment for fruit and other food.

There are two flush-type auxiliary seats, equipped with back and arm rest. These are mounted on swivels so that the passenger may face either the rear or side of the car. The footrest is hollow and serves as a storage place for a walking stick and umbrella.

The rear seat is constructed along the lines of a divan, padded to the shoulder line and with a luxuriously upholstered arm rest in normal position. In the right-hand arm rest are the rear compartment radio control, ash receiver and buttons for operating the partition between front and rear compartments. In the left-hand arm rest are a humidor and ash receiver. These arm rest compartments are protected by Dirigold covers.

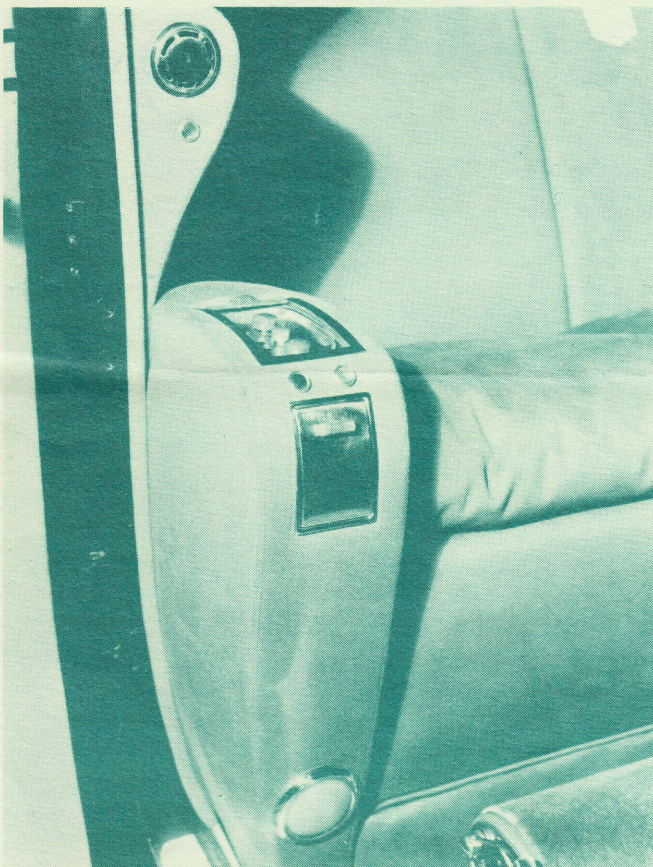
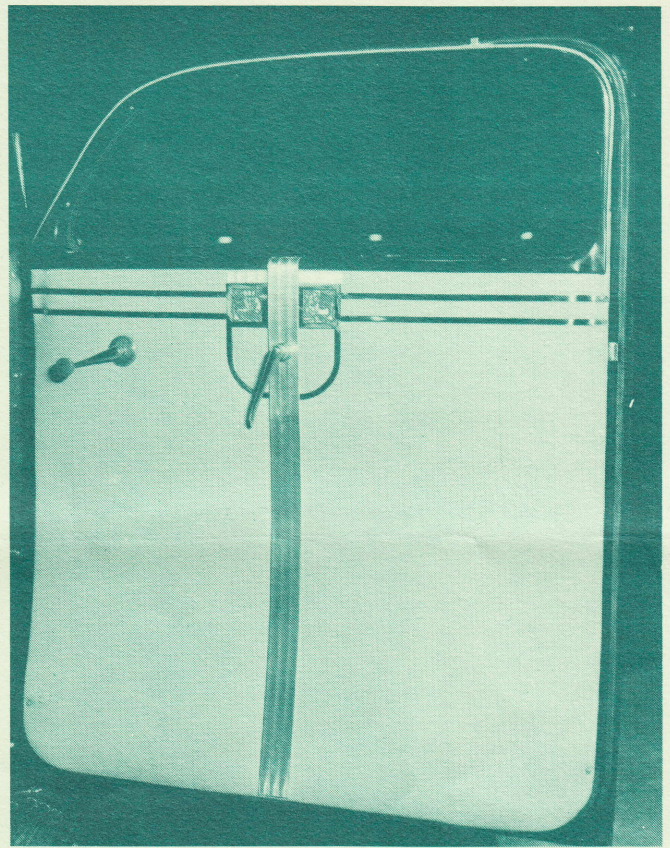
Rear cushions are of the box type construction on which is mounted three down-filled cushions. Behind the folding arm rest in the center is a writing desk with stationery and pen and pencil sets. This desk has a cover that folds down and may be used as a serving tray. Recessed in a compartment behind the arm rest are a thermos bottle and a toilet compartment with an electric razor and plug for attaching it, together with a brush and comb.

All hardware in the rear compartment including brackets on auxiliary seats and serving compartment is of Dirigold.

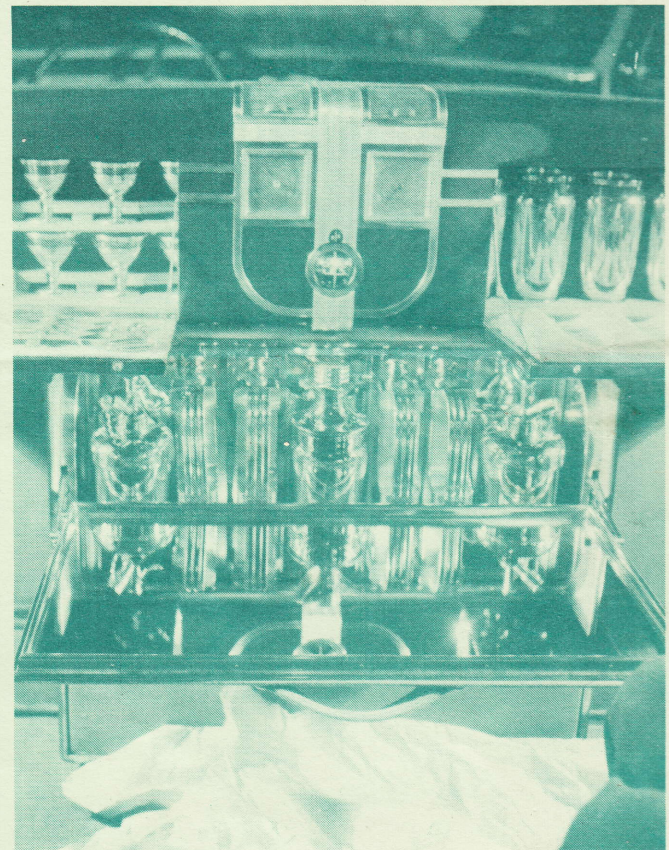
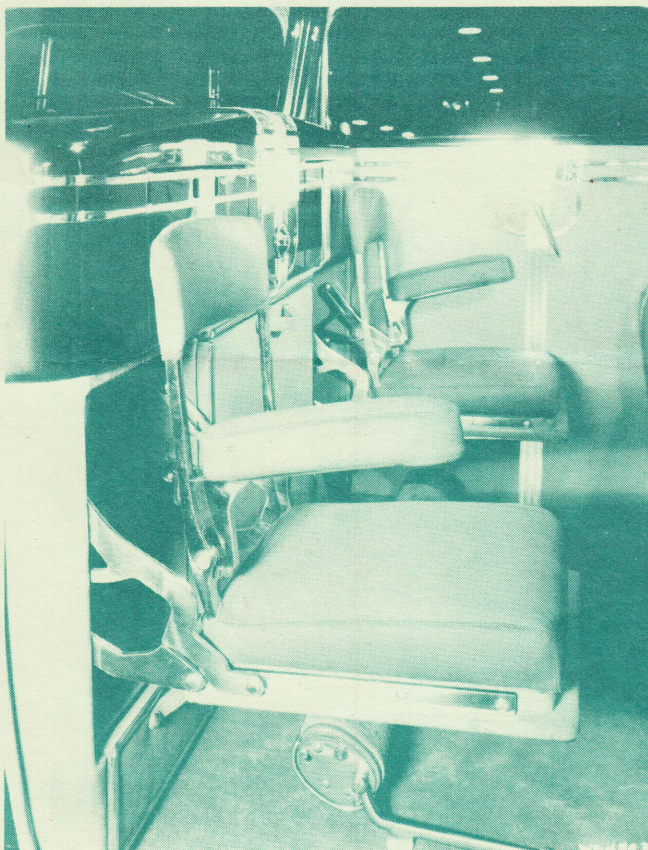
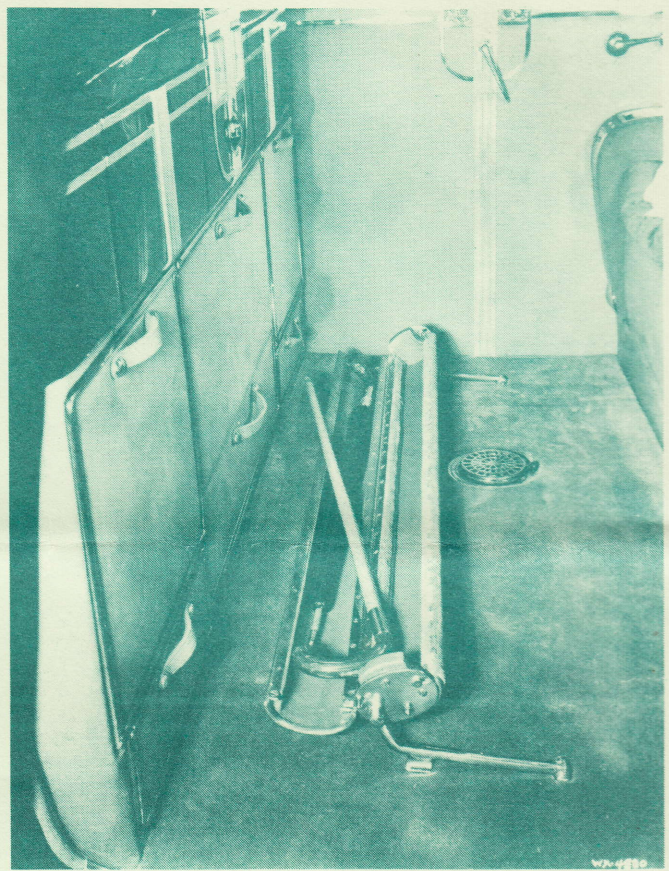
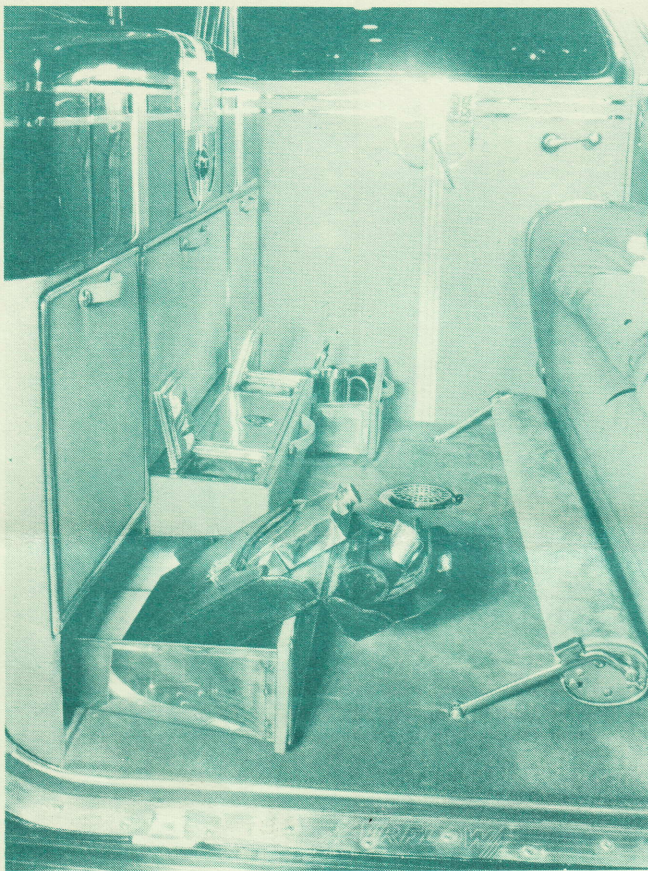
Above the partition separating the two compartments is the radio loud speaker, a modernistic design in Dirigold and silver.

Obviously with this magnificent vehicle at his command, the busy Major will not have to waste any time when traveling about New York or between the city and his country home in Ossining. As he has to make every minute count to keep abreast of his tremendous daily program, he was thinking of utility as well as luxury when he ordered this Chrysler Airflow.









Owned and restored by Frank Kleptz, Terre Haute, Indiana